



University of Isfahan English Proficiency Test (UIEPT)

آزمون بسندگی زبان انگلیسی دانشگاه اصفهان



تأ شماره	از شماره	تعداد سؤال	مواد امتحانی
	بخش A	یک موضوع انتخابی از دو موضوع داده	(۱) نوشتاری
۱۵	۱	۱۵	(۲) شنیداری
۳۵	۱۶	۲۰	(۳) گرامر
۴۵	۳۶	۱۰	(۴) واژگان
۷۰	۴۶	۲۵	(۵) درک مطلب

۱۴۴

دوره آزمون:



تعداد سؤالات: ۷۰ سؤال چهارگزینه‌ای + ۱ سؤال نوشتاری



تعداد صفحات سوال: ۱۳ صفحه



زمان پاسخگویی: ۱۱۰ دقیقه (۲۰ دقیقه برای بخش نوشتاری در



شروع آزمون و سپس ۹۰ دقیقه برای ۷۰ سؤال بقیه بخش ها)

تاریخ برگزاری: ۱۴۰۵/۰۳/۲۱



محل برگزاری: اصفهان، میدان آزادی، دانشگاه اصفهان، سه راه زبان،



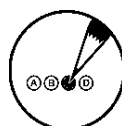
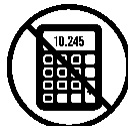
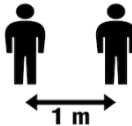
ساختمان شهید بهشتی

نام و نام خانوادگی:

شماره دانشجویی:

رشته/گرایش تحصیلی:

دانشگاه/دانشکده:



(۱) کلیه پاسخ‌ها باید در پاسخنامه علامت زده شود. پاسخ سؤالات باید با مداد مشکی نرم و پررنگ در بیضی مربوط علامت گذاری شود.

(۲) لطفاً در دفترچه سؤالات و ذیل پاسخنامه، کلیه مشخصات خواسته شده را درج و امضا نمایید.

(۳) فرایند برگزاری آزمون به شرح زیر است: در ابتدا بخش نوشتاری به مدت ۲۰ دقیقه انجام خواهد شد. سپس بخش شنیداری و پس از آن بخش های دیگر. مدت زمان بخش شنیداری و دیگر بخش ها، ۹۰ دقیقه می باشد. مدت زمان کل آزمون از زمان شروع بخش نوشتاری ۱۱۰ دقیقه می باشد.

(۴) این آزمون نمره منفی ندارد.

(۵) این آزمون شامل ۷۰ سؤال چهارگزینه‌ای به علاوه بخش نوشتاری می‌باشد. همه سؤالات بخشهای شنیداری، گرامر، واژگان و درک مطلب نمره مساوی دارند. هر

سؤال 1.29 نمره از ۹۰ دارد. بخش نوشتاری ۱۰ نمره از ۱۰۰ نمره دارد. نمره کلی آزمون از ۱۰۰ محاسبه می شود: $70 \times 1.29 = 90 + 10 = 100$

(۶) در بخش نوشتاری آزمون باید یکی از دو موضوع داده شده را انتخاب کرده و حدود ۱۵۰ کلمه در مدت زمان ۲۰ دقیقه درباره آن بنویسید.

(۷) تعداد صفحات سوال (غیر از صفحه حاضر) ۱۳ صفحه می باشد. یک برگ پاسخنامه برای سؤالات چهارگزینه ای و یک برگ پاسخنامه بخش نوشتاری نیز داده خواهد شد. پاسخنامه اضافی نوشتاری تحویل نخواهد شد ولی در صورت نیاز می توانید از صفحه پشت پاسخنامه نوشتاری استفاده کنید.

(۸) نمرات به صورت کارنامه، حداکثر تا ۷۲ ساعت بعد در سایت مرکز زبان آموزی به نشانی ulc.ui.ac.ir اعلام خواهد شد.

(۹) هرگونه نظر در خصوص آزمون و یا تذکر اشکال احتمالی را می توانید به ایمیل مرکز زبان آموزی دانشگاه اصفهان به نشانی ulc.ui.ac.ir@gmail.com ارسال فرمایید.

(۱۰) به عنوان نمونه سؤال، پس از تحویل پاسخنامه، و صرفاً پس از اتمام آزمون، می‌توانید دفترچه سؤالات را به همراه خود ببرید.

(۱۱) کلید اولیه سؤالات پس از آزمون در کانال ایتای مرکز زبان آموزی قرار می‌گیرد. اگر در هنگام آزمون، پاسخ هر سوال را علاوه بر درج در پاسخنامه، در کنار هر سؤال هم بگذارید، پس از آزمون هم می‌توانید نمره خود را محاسبه نمایید و هم اشکالات خود را ملاحظه نمایید. این امر جنبه یادگیری هم دارد.

(۱۲) قبل و بعد از آزمون، همه تلاش برای به حداکثر رساندن میزان روایی و پایایی آزمون انجام می‌شود. پس از آزمون نیز، تک تک سؤالات مورد بررسی قرار می‌گیرد و اگر سوالی دارای استانداردهای آزمون سازی نباشد حذف می‌شود و نمره آن به دیگر سؤالات اضافه می‌شود.

(۱۳) ۸۰ دوره دفترچه سؤالات، فایل صوتی و کلید آزمونهای گذشته به صورت رایگان در سایت مرکز زبان آموزی وجود دارد. برای ایجاد انگیزه جهت مطالعه این آرشیو ارزنده، در هر دوره آزمون، تعداد ۱۰ سؤال از سؤالات دوره‌های گذشته انتخاب می‌شود. برای دسترسی به این آرشیو، به سایت مرکز مراجعه نمایید یا از طریق لینک مستقیم b2n.ir/uiiept_archive دانلود نمایید.

(۱۴) جهت اطمینان از عدم به همراه داشتن هر گونه وسیله الکترونیک، با استفاده از ابزار تشخیص وسایل الکترونیک، در هنگام ورود به جلسه و نیز در هنگام برگزاری آزمون، بررسی‌های لازم انجام می‌شود.

(۱۵) پس از اعلام نمرات، سامانه نمرات اتوماتیک بسته می‌شود و امکان هیچ گونه تغییر نمره وجود نخواهد داشت.

برای شما داوطلبین گرامی، آرزوی موفقیت داریم.



Part A: Writing

Choose one of the following topics and write an essay about it. Write for at least 150 words in no more than 20 minutes.

A) *The best way to teach children to cooperate is through team sports at school.* To what extent do you agree with this view? Give reasons for your answer and include any relevant examples from your own experience or knowledge.

B) *Some people say that more money should be invested in science than in other subjects.* To what extent do you agree or disagree? Give reasons for your answer and include any relevant examples from your own experience or knowledge.



Part B: Listening

Listen and mark your answers to questions 1-15 in the answer sheet. The audio will be played only once.

به فایل صوتی با دقت گوش دهید و پاسخ سؤالات ۱ تا ۱۵ را در پاسخنامه علامت بزنید. فایل صوتی تنها یک بار پخش خواهد شد.

Section A: Questions 1-10

Short Conversations



1) What will the woman probably do next?

- A) Write a message to the man.
- B) Make some phone calls.
- C) Respond to the man's questions
- D) Get a new phone installed.

2) What does the woman mean?

- A) She's not sure if she's free.
- B) She's marked it on her calendar.
- C) She'll write a check for the calendar
- D) Her calendar says she has to have a meeting at three.

3) What does the man mean?

- A) He barely rode the bicycle.
- B) He didn't have enough money.
- C) The bicycle didn't need to be paid for
- D) He paid for the bicycle.

4) What is the woman mean?

- A) She fixed the television.
- B) Bob made the television work.
- C) The woman looked at Bob on television.
- D) Bob works for the woman.

5) What does the woman say about the assistant?

- A) He helped her say what she couldn't say.
- B) He hasn't helped her very much.
- C) She was unable to say anything about him.
- D) What he said was very helpful.

6) What does the woman suggest?

- A) The man should spend more time on registration.
- B) The man should walk more quickly through registration.

- C) The man should send in his registration materials.
- D) the man should try to avoid registering next semester.

7) What does the man mean?

- A) He couldn't find Paula's phone number, so he didn't call her.
- B) He couldn't give Paula the list over the phone.
- C) When he went to call Paula, he couldn't find the list,
- D) He couldn't recollect the number that was on the list.

8) What does the woman mean?

- A) She couldn't take her luggage to the store.
- B) She stored her luggage at the train station.
- C) She carried her luggage from the train station to the store.
- D) There were no lockers for her bags.

9) What had the man assumed?

- A) The woman had chosen psychology as a major. C) The woman was uninformed.
- B) The woman had taken a different major. D) The woman needed to see a psychiatrist.

10) What does the woman mean?

- A) She would like the man to repeat what he said.
- B) She thinks the exam could have been a little more difficult.
- C) She shares the same opinion of the exam as the man.
- D) She believes that the exam was easy.

Section B: Questions 11-15

Lecture



11) What is the primary purpose of archaeological excavation techniques and methodologies?

- A) To preserve ancient artifacts. C) To analyze modern cultures.
- B) To uncover mysteries of the past. D) To study geological formations.

12) Which principle guides archaeological excavations by recognizing layers of soil and debris?

- A) Geology and mineralogy. B) Stratigraphy. C) Paleontology. D) Geography.

13) Why is accurate recording and documentation crucial in archaeological excavations?

- A) To create detailed maps for tourists. C) To foster transparency and accountability.
- B) To prevent the disturbance of soil layers. D) To facilitate the sale of artifacts.

14) What is the term used to describe remains such as plant and animal remnants found at archaeological sites?

- A) Relics. B) Ecofacts. C) Artifacts. D) Fossils.

15) Which technological advancement in archaeology provides an aerial view for mapping larger areas?

- A) Total stations. B) Ground-penetrating radar. C) 3D laser scanning. D) Drones.



Note-taking Box for the Listening Part

برای یادداشت برداری در هنگام شنیدن بخش شنیداری، می توانید از فضای زیر استفاده کنید.



Part C: Grammar

تشخیص گزینه صحیح

➤ **Section 1.** Read each test item carefully and answer the questions by choosing the answer (a), (b), (c) or (d). Then mark the correct choice on your answer sheet.

16) For the first three months, she ... chemotherapy on a weekly basis.

- A) was received B) was receiving C) receive D) has receiving

17) Jane believes that her team members easily won the game because they are familiar with teamwork, ...?

- A) aren't they B) didn't they C) didn't she D) doesn't she

18) His plan was to buy pieces of chocolate ... them to his classmates for two cents a piece.

- A) who resold B) and resell C) but resold D) by reselling

19) The man who managed ... the documents is now a hero.

- A) obtain B) to obtain C) obtaining D) obtained

20) ... in fluorescent lamps, television tubes, and other devices.

- A) Phosphors are used B) It is phosphors C) To use phosphors D) Using phosphors

21) Today, it is known that ... magnetism.

- A) electricity related to C) electricity is related to
B) relating to electricity D) as electricity to

22) According to the third law of thermodynamics, ... possible is -273.16 degrees centigrade.

- A) that temperature is lowest C) the temperature is lowest
B) lowest temperature D) the lowest temperature

23) At the end of the twentieth century, a little oil was discovered just off the northern shore. ... scientists have found that there is a lot of oil underneath the island.

- A) Since B) Since then C) Yet D) Already

24) The decimal numeral system is one of the ... ways of expressing numbers.

A) useful most world's

C) useful world's most

B) world's most useful

D) most world's useful

25) Seldom ... games been of practical use in playing real games.

A) theories of mathematics

C) has the mathematical theory of

B) theorized as mathematics

D) the mathematical theory has

تشخیص گزینه غلط



Section 2. Choose the underlined words or phrases that need to be corrected. Mark the answers on your answer sheet.

26) People usually wear clothing for two basic purpose – warmth and decoration.

A B

C D

27) Weather is a transitory expression of climate that can change great from day to day or season to season.

A

B

C

D

28) Yttrium is a silvery, metallic element used in the made of red phosphors for television picture tubes.

A

B

C

D

29) The ease with which houseplants can grow causes them to be popular among amateur

A

B

C

D

30) Paintings of religious, ceremonial, or history character tend to elevate their subjects above the level of ordinary existence.

A

B

C

D

31) The discovery of the magnetic effects of coils made possible to measure an electric current.

A

B

C

D

32) Since the 1950's, the city has financed several major programs of urban renew, including rebuilding the harbor.

A

B

C

D

33) Animal researchers have identified many behavioral patterns associated with selection a place to live, avoiding predators, and finding food.

A

B

C

D

34) Average world temperatures have risen on half a degree Celsius since the mid-nineteenth century.

A

B

C

D

35) Contemporary film directors, some of them write the scripts for, act in, and even produce their own motion pictures, are thereby assuming ever more control of their art.

A

B

C

D



Part D: Vocabulary

- Read each test item carefully and answer the questions by choosing the answer (a), (b), (c) or (d). Then mark the correct choice on your answer sheet.

Vocabulary Part 1: Gap-Filling

- 36) A magazine's success depends on its ability to ... advertising.
A) ease B) study C) predict D) attract
- 37) The amount was neither too great nor too small; a (n) ... amount of money was required.
A) enormous B) minute C) moderate D) huge
- 38) His winning the reward was the highest ... of his career.
A) spectacle B) disaster C) hypothesis D) achievement
- 39) Some children ... a complete transformation when they become teenagers.
A) evolve B) compile C) generate D) undergo
- 40) Like any other activity, there are risks ... in almost every sport, even in the so-called safe sports.
A) inherent B) possessive C) proportional D) foundational

Vocabulary Part 2: Synonym

- 41) The use of formaldehyde in insulation was recently **banned** by the Consumer Product Safety Commission.
A) studied B) backed C) sponsored D) prohibited
- 42) Linen could not be manufactured by machine until recently because the inelasticity of the fibers caused them to break **readily** under tension.
A) unevenly B) easily C) unexpectedly D) ultimately
- 43) Pollutants introduced into the lake can rapidly **accelerate** its natural aging process.
A) change B) speed up C) turn round D) destroy
- 44) Although army ants are almost **sightless**, they march in precise military formation.
A) blind B) lame C) deaf D) mute
- 45) Different biologists, analyzing the same data, may arrive at different and sometimes **conflicting** interpretations.
A) unsuitable B) invalid C) unintelligent D) incompatible



Part E: Reading Comprehension

- Read the texts carefully and choose the best answer to the questions that follow.



Reading 1

The FIFA World Cup was first held in 1930, when FIFA, the world's football governing body, decided to stage an international men's football tournament under the era of FIFA president Jules Rimet who



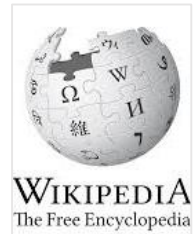
put this idea into place. Jules Rimet was the president of FIFA from 1921 to 1954. Rimet was appreciated so much for bringing the idea of FIFA to life that in 1946 the trophy was named the Jules Rimet Cup instead of the World Cup Trophy. The inaugural edition, held in 1930, was contested as a final tournament of only thirteen teams invited by the organization. Since then, the World Cup has experienced successive expansions and format remodeling, with its current 48-team final tournament preceded by a two-year qualifying process involving over 200 teams worldwide.

The first official international football match was played in 1872 in Glasgow between Scotland and England, although at this stage the sport was rarely played outside Great Britain. At the end of the 19th century, games that were considered the "football world championship" were meetings between leading English and Scottish clubs, like the 1895 game between Sunderland A.F.C. and the Heart of Midlothian F.C., which Sunderland won. By the twentieth century, football had gained ground all around the world and national football associations were being founded. The first official international match outside the British Isles was played between Uruguay and Argentina in Montevideo in July 1902. The Fédération Internationale de Football Association (FIFA) was founded in Paris on 21 May 1904 – comprising football associations from France, Belgium (the preceding two teams having played their first national

against each other earlier in the month), Denmark, the Netherlands, Spain, Sweden, and Switzerland, with Germany pledging to join.

As football began to increase in popularity, it was contested as an IOC-recognized Olympic sport at the 1900 and 1904 Summer Olympics, as well as at the 1906 Intercalated Games, before becoming an official FIFA-supervised Olympic competition at the 1908 Summer Olympics. Organised by England's Football Association, the event was for amateur players only and was regarded suspiciously as a show rather than a competition. The England national amateur football team won the event in both 1908 and 1912.

There was an attempt made by FIFA to organize an international football tournament between nations outside of the Olympic framework in 1906 and this took place in Switzerland. These were very early days for international football and the official history of FIFA describes the competition as having been a failure.



✓ متن فوق از مقالات منتشر شده در دانشنامه آزاد ویکی پدیا (Wikipedia) است.

✓ این مقاله در تاریخ ۳ ژوئن ۲۰۲۶ منتشر شده است. آزمون حاضر در تاریخ ۱۱ ژوئن ۲۰۲۶ برگزار می‌شود.

✓ لینک دسترسی به مقاله: https://en.wikipedia.org/wiki/History_of_the_FIFA_World_Cup

46) Which statement best summarizes the passage? The passage

- A) describes how football clubs in Britain competed for early world championship titles.
- B) focuses on how Olympic football tournaments replaced other international competitions.
- C) explains how professional football leagues expanded throughout Europe.
- D) explains how international football developed and how early competitions eventually led to the FIFA World Cup.

47) What can be inferred about football in the late 19th century?

- A) It was mostly limited to Britain
- B) It was already organized by FIFA
- C) It was played mainly in the Olympics
- D) It had more than 200 national teams

48) According to the passage, how many teams participated in the first World Cup tournament?

- A) 8
- B) 13
- C) 24
- D) 48

49) What does the passage suggest about football by the twentieth century? It

- A) had become less popular in Europe.
- B) was spreading internationally.
- C) was played only by professional players.
- D) was controlled by Olympic committees only.

50) Why does the author mention the 1906 international tournament in Switzerland?

- A) To explain why the Olympics stopped hosting football.
- B) To describe the first professional football league.
- C) To show an early unsuccessful attempt at organizing a global competition.
- D) To introduce the founding of FIFA.

51) When was the first FIFA World Cup held?

A) 1872

B) 1904

C) 1930

D) 1946

52) Which two countries played the first international match outside the British Isles?

A) France and Belgium

C) Spain and Switzerland

B) Uruguay and Argentina

D) Denmark and Sweden

53) The passage suggests that the modern World Cup is different from the 1930 tournament primarily in terms of

A) leadership

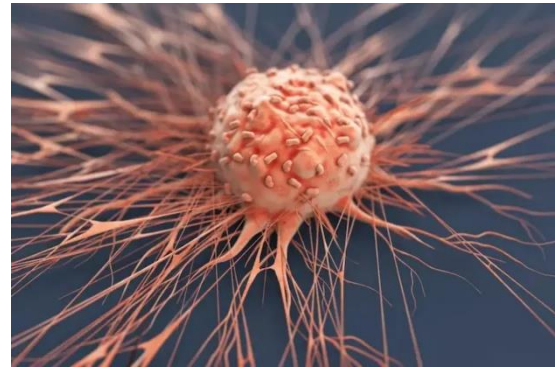
B) location

C) trophy design

D) scale and structure

Reading 2

Researchers around the world are grappling with a vexing problem: why are so many young people developing cancers once considered the purview of old age? The question was prominent at two of the world's largest cancer meetings this



year, and hypotheses abounded. Ultra-processed foods, obesity, microbial toxins and agricultural chemicals were all considered. But a clear answer remained elusive.

“Multiple cancers are increasing in incidence globally among individuals under the age of 50,” oncologist Kimmie Ng told the audience at the American Society of Clinical Oncology meeting in Chicago, Illinois, last week. “The vast majority are considered sporadic, with unknown cause.” Worldwide, more than 9,000 cases of cancer are diagnosed in adults under the age of 50 each day, epidemiologist Hyuna Sung told the American Association for Cancer Research (AACR) annual meeting in San Diego, California, in April. But lumping these diagnoses together could obscure clues as to their cause, she cautioned. “Rising incidence of cancers among young adults does not reflect a **single story**,” said Sung, who works at the American Cancer Society in Atlanta, Georgia.

Clues to each story lie in the data. If diagnoses of a particular cancer increase suddenly and across all age groups, for example, the culprit might be a change in how that cancer is detected or classified. In the early 2010s, for example, the definition of pancreatic cancer was expanded to include pancreatic

neuroendocrine tumours, which form in the pancreas's insulin-making regions. Pancreatic cancer diagnoses had been slowly rising in the years before that change, but after it, the increase accelerated, including in people under the age of 50. The classification change probably does not fully explain the rise in early-onset pancreatic cancer, says Sung, but it probably accounts for much of it.

For other cancers, however, the increase in diagnoses in young people reflects a worrying change in the rate at which those cancers occur. Colorectal cancer is one of the clearest examples: in the United States, the incidence of advanced colorectal cancer has increased by about 3% each year since around 2010 in people between the ages of 20 and 49. In 2023, colorectal cancer became the leading cause of cancer death in this age group. Uterine cancer and liver cancer diagnoses and deaths are rising in young women, says Sung. In these cancers, the surge in diagnoses appears to be a 'birth cohort effect', meaning that people born in a particular period are at higher risk than are those who are born before that period.

Even with these numbers, cancer deaths in people under the age of 50 remain a small percentage of overall cancer mortality. But the higher risk of certain cancers in this generation compared with previous ones could persist into older ages, when overall cancer risk becomes much higher. "This increasing trend of cancer among young adults really signals what comes next in 20 and 30 years, when they become middle-aged and elderly," says Sung.



✓ متن فوق از جدیدترین مقالات منتشر شده در مجله نیچر (Nature) است.
✓ این مقاله در تاریخ ۸ ژوئن ۲۰۲۶ منتشر شده است. آزمون حاضر در تاریخ ۱۱ ژوئن ۲۰۲۶ برگزار می‌شود.
✓ لینک دسترسی به مقاله: <https://www.nature.com/articles/d41586-026-01780-6>

54) According to the text, what is true about the majority of cancer cases in people under 50? They ...

- A) are hereditary and well-understood. C) are occurring mostly in the United States.
B) occur randomly without a known cause. D) are easily preventable with dietary changes.

55) According to paragraph 1, which of the following is true regarding the cause of rising cancer rates in young people?

- A) It has been definitively linked to agricultural chemicals.
B) It was the primary topic at two major cancer conferences.

- C) It is mostly caused by a lack of exercise.
- D) It has been solved by recent researchers.

56) Which of the following is NOT mentioned as a rising concern for young women?

- A) Pancreatic cancer
- B) Uterine cancer
- C) Liver cancer
- D) Deaths related to these cancers

57) In paragraph 3, the pronoun “it” refers to

- A) pancreatic cancer
- B) a particular age group
- C) a definition of cancer
- D) the increase in diagnoses

58) According to paragraph 4, what is notable about colorectal cancer in the United States?

- A) It has become the leading cause of cancer death for people aged 20–49.
- B) It has decreased by 3% since the year 2010.
- C) It is the only cancer that does not show a "birth cohort effect."
- D) It is less advanced when found in young people than in old people.

59) The word “purview” in paragraph 1 is closest in meaning to

- A) result
- B) domain
- C) cause
- D) history

60) According to paragraph 3, what happened to the classification of pancreatic cancer in the early 2010s? It was

- A) restricted to only include elderly patients.
- B) broadened to include neuroendocrine tumours.
- C) changed to exclude insulin-making regions.
- D) removed from global databases.

61) Which of the following best expresses the “single story” mentioned in paragraph 2?

- A) Young people should only focus on one type of prevention.
- B) Cancer research should be published in only one major journal.
- C) Only people under 50 are at risk for obesity-related cancers.
- D) All cancers in young people have one identical cause.

62) According to the text, how do cancer deaths in people under 50 compare to the overall total?

- A) They represent the majority of all cancer deaths.
- B) They are a relatively small percentage of total deaths.
- C) They have already surpassed deaths in the elderly.
- D) They are expected to drop to zero in the next 20 years.

Reading 3

Minutes before my very first lecture to first-year undergraduates, I stood outside a locked lecture hall fumbling with my bag, trying to get in and set up before the students arrived. A passing staff member reassured me: “Don’t worry, you aren’t late. The professor will be here soon to set up the room.” Those words confirmed my worst



fear: I did not look the part. Doing my best to keep a level voice, I replied, “I am the professor, could you please help me open the door?” This wasn’t the first time in my career I have been assumed to be less than what I am. But it was a **pivotal moment**, and it forced me to confront a question I had been avoiding: Why did I keep feeling I had to prove I belonged?

As a petite, 34-year-old Indian woman working at a U.K. university, I do not fit the usual **archetype** of authority. I am frequently mistaken for an undergraduate, a research assistant, or a Ph.D. student. At times, students or university security have simply called me “Miss.” Outside academia, I am fast approaching what is commonly labeled “advanced maternal age.” Inside it, I am treated as too young to possibly be an assistant professor. For those of us women from the Global South who manage to gain a foothold in Western academia, getting there is only half the battle. Once there, we face barriers that are hard to name. Like many researchers, I negotiate insecurities about research outputs, teaching style, and contributions to my institution and the broader academic community. But I also spend energy proving I belong, energy others get to spend on the science itself.

In my first year, I said yes to extra lectures beyond my allocated workload because I believed doing more was the only way to justify being there. Somewhere along the way, I stopped waiting for others to underestimate me. I started to do it myself. I found myself constantly questioning my own legitimacy and calculating how much of myself I really could bring into the lecture hall, into meetings with students or new collaborators, or even to projects I lead.

When a late-arriving student at an orientation meeting asked, “Sorry, who are you exactly? Are you a Ph.D. student or something?” I was compelled to list my credentials (degrees across India, the United States, and the United Kingdom, and more than a decade of study), as if they could shield me from the assumptions already in the room. Although **they** seemed to silence the students’ doubts, they didn’t stop those in my own mind.

Now, approaching the end of my second year as an assistant professor, I have realized something unexpected: The real work is not convincing myself I belong, as though this were a confidence problem I could fix with enough willpower. Instead, the challenge is rewiring my own perspectives and my responses to the subtle and persistent messages telling me I'm not what a professor looks like. That includes unlearning my own reflexive responses to those messages, such as apologizing for my own presence, or preemptively using self-deprecating humor.



✓ متن فوق از جدیدترین مقالات منتشر شده در مجله معتبر ساینس (Science) است.

✓ این مقاله در تاریخ ۴ ژوئن ۲۰۲۶ منتشر شده است. آزمون حاضر در تاریخ ۱۱ ژوئن ۲۰۲۶ برگزار می‌شود.

✓ لینک دسترسی به مقاله: <https://www.science.org/content/article/i-may-not-look-professor-now-i-know-i-belong>

63) Which statement best summarizes the passage?

- A) A professor describes her academic training in several countries and explains how it shaped her research career.
- B) A university professor explains the challenges of teaching undergraduate students during the early years of her career.
- C) A young professor describes how stereotypes and assumptions made her question whether she truly belongs in academia.
- D) A young academic describes her experiences studying and working in universities across different countries.

64) Which of the following is NOT mentioned as a way others mistake the author's role?

- A) an undergraduate
- B) a Ph.D. student
- C) a research assistant
- D) a department chair

65) In paragraph 3, what can be inferred from the sentence "Somewhere along the way, I stopped waiting for others to underestimate me. I started to do it myself"? The author ...

- A) became less aware of others' judgments
- B) internalized the doubts and biases directed at her
- C) began underestimating her students
- D) decided to leave her profession

66) The word "archetype" in paragraph 2 is closest in meaning to

- A) schedule
- B) ideal example
- C) criticism
- D) profession

67) Why did the author list her credentials at the orientation meeting? To ...

- A) defend herself against assumptions about her status
- B) impress the students with her international education
- C) apply for a promotion
- D) introduce her research project

68) What was the "pivotal moment" referred to in paragraph 1? Being ...

- A) assigned to teach first-year undergraduates
- B) mistaken for someone other than the professor
- C) unable to open the lecture hall door
- D) praised for her achievements

69) In paragraph 4, what does the pronoun "they" refer to?

- A) the credentials
- B) the assumptions
- C) the students
- D) the degrees in the UK

70) Why did the author accept extra lectures during her first year?

- A) She needed more teaching experience.
- B) The university required it.
- C) She wanted to impress her students.
- D) She believed she needed to justify her presence.

قابل توجه شرکت کنندگان گرامی:

(۱) در صورت مساعد بودن شرایط، آزمون دوره ۱۴۵، روز پنجشنبه مورخ ۱۴۰۵/۰۳/۲۸ ساعت ۱۰ صبح به صورت حضوری برگزار خواهد شد.



دوره آزمون	تاریخ
۱۴۳	پنجشنبه ۲۱ خرداد
۱۴۵	پنجشنبه ۲۸ خرداد
۱۴۶	پنجشنبه ۱۱ تیر
۱۴۷	پنجشنبه ۲۵ تیر

Ulc.ui.ac.ir
eitaa.com/uic_official
ulc.ui.ac.ir@gmail.com

(۲) جهت اطلاع از آخرین اخبار، در کانال رسمی مرکز زبان آموزشی دانشگاه اصفهان در ایتا عضو شوید.



(۳) برای راهنمایی و مشاوره رایگان زبانی می توانید روزهای یکشنبه، سه شنبه، پنجشنبه و جمعه از ساعت ۹ صبح تا ۱۲ از طریق شماره موبایل ۰۹۳۷۶۰۹۳۹۵۸۰ تماس بگیرید.



مرکز زبان آموزشی دانشگاه اصفهان

- مشاوره تخصصی زبان با دکتر حسوندی
- به صورت تلفنی و رایگان
- یکشنبه، سه شنبه، پنجشنبه و جمعه ها
- ساعت ۹ تا ۱۲ قبل از ظهر

09395809376

- آزمون های زبان داخلی و خارجی:
- IELTS, TOEFL, PTE, SAT, GRE, MSRT, MCHE, UIEPT, EPT, TOLIMO, MHLE, OPI, OET, MELAB, iTEP, Cambridge Exams (KET, PET, FCE, CAP, CPE), and TOEIC
- دوره های مکالمه، ترجمه، بحث، دوره های ترمیک کودک، نوجوان و بزرگسال، کلاس ها و آزمون بسندگی دانشجویان دکتری، زبان عمومی، مقاله نویسی و ...

(۴) دو بسته آموزشی آفلاین ۹۰ ساعته و ۱۰۰ ساعته منابع کمک آموزشی مفیدی برای آموزش و تمرین بخشهای مختلف آزمون بسندگی می باشند.



دوره توانمندسازی
۱۰۰ ساعته بسندگی زبان انگلیسی

چهار دوره ویژه دانشجویان دکتری

- دوره آمادگی بسندگی دکتری
- دوره آموزش گرامر
- دوره توانمندسازی نگارش و ویرایش متون آکادمیک به زبان انگلیسی
- دوره توانمندسازی ترجمه مقالات علمی به زبان انگلیسی

ثبت نام دوره

۰۲۱۳۷۶۰۹۳۷۶
@ ulc.ui.ac.ir

100



دوره آفلاین حل تست بسندگی
زبان انگلیسی ۹۰ ساعته

ویژه دانشجویان دکتری

- حل تست درک مطلب و واژگان
- حل تست گرامر
- حل تست آزمون های ادوار گذشته بسندگی مرکز زبان

ثبت نام دوره

۰۲۱۳۷۶۰۹۳۷۶
@ ulc.ui.ac.ir

90