



# University of Isfahan English Proficiency Test (UIEPT)

## آزمون بسندگی زبان انگلیسی دانشگاه اصفهان



تأ شماره	از شماره	تعداد سؤال	مواد امتحانی
۱۵	۱	۱۵	شنیداری
۳۵	۱۶	۲۰	گرامر
۴۵	۳۶	۱۰	واژگان
۷۰	۴۶	۲۵	درک مطلب
بخش E		یک موضوع از دو موضوع داده شده	نوشتاری

نام و نام خانوادگی: .....

شماره دانشجویی: .....

رشته/گرایش تحصیلی: .....

دانشگاه/دانشکده: .....

# ۱۳۳

## دوره آزمون:



### تعداد سوالات: ۷۰ سؤال چهارگزینه‌ای + ۱ سؤال نوشتاری



### تعداد صفحات سوال: ۱۳ صفحه



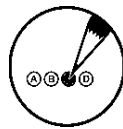
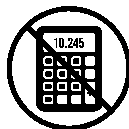
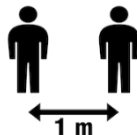
### زمان پاسخگویی: ۱۱۰ دقیقه (۲۰ دقیقه بخش نوشتاری و ۹۰ دقیقه برای ۷۰ سؤال بقیه بخش ها)



### تاریخ برگزاری: ۱۴۰۴/۱۰/۱۸



### محل برگزاری: اصفهان، میدان آزادی، دانشگاه اصفهان، سه راه زبان، ساختمان شهید بهشتی



- کلیه پاسخ‌ها باید در پاسخنامه علامت زده شود. پاسخ سوالات باید با مداد مشکی نرم و پرنرنگ در بیضی مربوط علامت گذاری شود.
- لطفاً در دفترچه سوالات و ذیل پاسخنامه، کلیه مشخصات خواسته شده را درج و امضا نمایید.
- فرایند برگزاری آزمون به شرح زیر است: در ابتدا بخش نوشتاری به مدت ۲۰ دقیقه انجام خواهد شد. سپس بخش شنیداری و پس از آن بخش های دیگر. مدت زمان بخش شنیداری و دیگر بخش ها، ۹۰ دقیقه می باشد. مدت زمان کل آزمون از زمان شروع بخش نوشتاری ۱۱۰ دقیقه می باشد.
- این آزمون نمره منفی ندارد.
- این آزمون شامل ۷۰ سؤال چهارگزینه‌ای به علاوه بخش نوشتاری می‌باشد. همه سوالات بخشهای شنیداری، گرامر، واژگان و درک مطلب نمره مساوی دارند. هر سؤال 1.29 نمره از ۹۰ دارد. بخش نوشتاری ۱۰ نمره از ۱۰۰ نمره دارد. نمره کلی آزمون از ۱۰۰ محاسبه می شود:  $70 \times 1.29 = 90 + 10 = 100$
- در بخش نوشتاری آزمون باید یکی از دو موضوع داده شده را انتخاب کرده و حدود ۱۵۰ کلمه در مدت زمان ۲۰ دقیقه درباره آن بنویسید.
- تعداد صفحات سوال ۱۳ صفحه می باشد. یک برگ پاسخنامه برای سوالات چهارگزینه ای و یک برگ پاسخنامه بخش نوشتاری نیز داده خواهد شد. پاسخنامه اضافی نوشتاری تحویل نخواهد شد ولی در صورت نیاز می توانید از صفحه پشت پاسخنامه نوشتاری استفاده کنید.
- نمرات به صورت کارنامه، حداکثر تا ۷۲ ساعت بعد در سایت مرکز زبان آموزی به نشانی [ulc.ui.ac.ir](http://ulc.ui.ac.ir) اعلام خواهد شد.
- هرگونه نظر در خصوص آزمون و یا تذکر اشکال احتمالی را می توانید به ایمیل مرکز زبان آموزی دانشگاه اصفهان به نشانی [ulc.ui.ac.ir@gmail.com](mailto:ulc.ui.ac.ir@gmail.com) ارسال فرمایید.
- به عنوان نمونه سؤال، پس از تحویل پاسخنامه، و صرفاً پس از اتمام آزمون، می توانید دفترچه سوالات را به همراه خود ببرید.
- کلید اولیه سوالات پس از آزمون در کانال ایتای مرکز زبان آموزی قرار می‌گیرد. اگر در هنگام آزمون، پاسخ هر سوال را علاوه بر درج در پاسخنامه، در کنار هر سؤال هم بگذارید، پس از آزمون هم می توانید نمره خود را محاسبه نمایید و هم اشکالات خود را ملاحظه نمایید. این امر جنبه یادگیری هم دارد.
- قبل و بعد از آزمون، همه تلاش برای به حداکثر رساندن میزان روایی و پایایی آزمون انجام می شود. پس از آزمون نیز، تک تک سوالات مورد بررسی قرار می گیرد و اگر سوالی دارای استانداردهای آزمون سازی نباشد حذف می شود و نمره آن به دیگر سوالات اضافه می شود.
- ۸۰ دوره دفترچه سوالات، فایل صوتی و کلید آزمونهای گذشته به صورت رایگان در سایت مرکز زبان آموزی وجود دارد. برای ایجاد انگیزه جهت مطالعه این آرشیو ارزنده، در هر دوره آزمون، تعداد ۱۰ سؤال از سوالات دوره‌های گذشته انتخاب خواهد شد. برای دسترسی به این آرشیو، به سایت مرکز مراجعه نمایید یا از طریق لینک مستقیم [b2n.ir/uiept\\_archive](http://b2n.ir/uiept_archive) دانلود نمایید.
- جهت اطمینان از عدم به همراه داشتن هر گونه وسیله الکترونیک، با استفاده از ابزار تشخیص وسایل الکترونیک، در هنگام ورود به جلسه و نیز در هنگام برگزاری آزمون، بررسی‌های لازم انجام می‌شود.
- پس از اعلام نمرات، سامانه نمرات اتوماتیک بسته می شود و امکان هیچ گونه تغییر نمره وجود نخواهد داشت.

## برای شما داوطلبین گرامی، آرزوی موفقیت داریم.

## Part A: Listening



Listen and mark your answers to questions 1-15 in the answer sheet. The audio will be played only once.

به فایل صوتی با دقت گوش دهید و پاسخ سوالات ۱ تا ۱۵ را در پاسخنامه علامت بزنید. فایل صوتی تنها یک بار پخش خواهد شد.



### Section A: Questions 1-10

### Short Conversations



#### 1) What does Emily imply?

- A) She is still using the gardening tools.                      C) She returned the tools already.  
B) She forgot to borrow the tools.                              D) The tools are currently lost.

#### 2) What does the woman mean?

- A) She believes he might be too busy to care for a dog.                      C) She dislikes dogs.  
B) She thinks he should get a cat instead.                              D) She encourages getting a dog.

#### 3) What had the woman initially believed?

- A) Jessica wouldn't participate in the marathon.                      C) The marathon was canceled.  
B) The marathon had already occurred.                              D) Jessica would win the marathon.

#### 4) What can be said about Alice's jacket?

- A) It's brand new.    C) Someone tailored it.  
B) She just repaired it.    D) It's just been sold.

#### 5) What will the man probably do next?

- A) Use a credit card.    C) Cancel the transaction.  
B) Go to his desk.    D) Pay with cash.

#### 6) What does the woman tell the man?

- A) He shouldn't have lost the textbook.                              C) All chapters are mandatory.  
B) He only needs to read specific parts.                              D) Some chapters are optional.

#### 7) What does the woman imply about the concert?

- A) She found it too long.    C) She didn't like the music.  
B) She wished it lasted longer.    D) She only liked the last song.

#### 8) What does the woman mean?

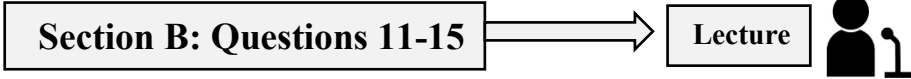
- A) Either color is acceptable.    C) She prefers one color over the other.  
B) The form doesn't need to be filled out.                              D) A pencil would be better.

#### 9) What does the man mean?

- A) He finds the recipe confusing.    C) He hasn't tried the recipe.  
B) He agrees the recipe is simple.    D) He doesn't care about the recipe.

**10) What is the problem with the projector?**

- A) It was left behind.
- B) It's missing parts.
- C) It's not the right model.
- D) It's malfunctioning.



**11) What is the main topic of the lecture?**

- A) The history of forensic science
- B) The development of law enforcement tactics
- C) The process of criminal profiling
- D) The psychology of criminal behavior

**12) What is the primary purpose of criminal profiling?**

- A) To gather physical evidence from crime scenes
- B) To identify potential suspects and understand offender behavior
- C) To interrogate suspects more effectively
- D) To classify different types of crimes

**13) When did criminal profiling become more formalized?**

- A) In the early 19th century
- B) In the late 19th century
- C) In the mid-20th century
- D) In the early 21st century

**14) What is one major criticism of criminal profiling?**

- A) It is too costly for law enforcement agencies
- B) It often leads to quick arrests without trial
- C) It provides no useful information in investigations
- D) It can lead to bias and be based on stereotypes

**15) Which case is mentioned as a success story of criminal profiling?**

- A) The Zodiac Killer
- B) Jack the Ripper
- C) The Unabomber, Ted Kaczynski
- D) The Boston Strangler



**Note-taking Box**

-----  
-----  
-----  
-----  
-----  
-----  
-----

## Part B: Grammar



**Section 1.** Read each test item carefully and answer the questions by choosing the answer (a), (b), (c) or (d). Then mark the correct choice on your answer sheet.

تشخیص گزینه صحیح

**16) He ... by the police once before for stealing.**

- A) wanted                      B) was being wanted                      C) had been wanted                      D) had wanted

**17) He ... more if you would agree to help him.**

- A) learned                      B) would have learned                      C) had learned                      D) would learn

**18) He ... anything I say.**

- A) is never understanding                      C) never understands  
B) never understood                      D) was never understanding

**19) ... of the three boys got a prize.**

- A) Both                      B) A few                      C) Each                      D) Every

**20) He spoke so confidently ... I felt sure we could believe him.**

- A) as                      B) that                      C) so that                      D) than

**21) There has been a decrease ... the number of students entering the Technical College this year.**

- A) on                      B) in                      C) over                      D) of

**22) By far, ... of Saudi Arabia is oil.**

- A) it is the most important export                      C) that is the most important export  
B) the most important export is                      D) the most important export

**23) Not until about a century after Julius Caesar landed in Britain ... actually conquer the island.**

- A) the Romans did                      B) did the Romans                      C) the Romans                      D) Romans that

**24) ... was made of minute particles called corpuscles was believed by scientists.**

- A) Light                      B) That light                      C) As light                      D) whereas light

**25) Digital systems work first by changing quantity and then ... into strips of numbers.**

- A) convert the measurements                      C) to convert the measurements  
B) the measurements convert                      D) converting the measurements



**Section 2.** Choose the underlined words or phrases that need to be corrected. Mark the answers on your answer sheet.

تشخیص گزینہ غلط

- 26) Although France is a predominant Catholic country, it has a large Muslim minority.  
A B C D
- 27) Tea did not become popular in Europe until the mid-17<sup>th</sup> century when it has been  
A B C  
first imported to England and Holland.  
D
- 28) Many disabled children cannot derive full enjoyment from toys make for non-disabled  
A B C D  
children.
- 29) As medical costs soar, the idea of a complete physical checkup has come under fire as  
A B C  
both a waste of time or money.  
D
- 30) He been sitting here for hours thinking about his problems.  
A B C D
- 31) When asked his position on tariffs, the politician replied, "Their are no easy answers."  
A B C D
- 32) The view of art and its essential characteristics which was holding by the great Victorian  
A B  
critics descends in its essential characteristics from the Romantics.  
C D
- 33) That city makes a profound impression on all visitors because of its many lofty buildings,  
A B C  
department stores, its immense theater and etc.  
D
- 34) Ernest Hemingway, a famous writer, has created many novels which most of them  
A B  
have been translated into several languages.  
C D
- 35) On cool September afternoon, a number of boys went mountain climbing but  
A B  
unfortunately two of them were lost in the deep snow.  
C D

## Part C: Vocabulary



Read each test item carefully and answer the questions by choosing the answer (a), (b), (c) or (d). Then mark the correct choice on your answer sheet.

### Vocabulary Part 1: Gap-Filling

- 36) As he became more famous, it was more difficult for him to ... newspaper reporters.
- A) regret                      B) realize                      C) settle                      D) avoid
- 37) The complicated instructions for building the machine ... him.
- A) erupted                      B) deserved                      C) puzzled                      D) complained
- 38) Nowadays, there is a general disbelief in the idea that some people are ....
- A) courageous                      B) religious                      C) scholars                      D) witches
- 39) The board did not even consider my application, which I thought was rather ....
- A) unfair                      B) impractical                      C) restful                      D) worried
- 40) The commission's report suggested to the agricultural countries ... with their own farming methods.
- A) continue                      B) stop                      C) withdraw                      D) avoid

### Vocabulary Part 2: Synonym

- 41) Visual displays can be momentary. They do not last for a long time.
- A) consistent                      B) consequent                      C) temporary                      D) tempting
- 42) They broadcast the results immediately.
- A) censored                      B) determined                      C) announced                      D) interrupted
- 43) Medics venture their lives to save wounded soldiers.
- A) try to save                      B) preserves                      C) resembles                      D) expose to risk
- 44) He scrutinized the faces carefully to understand who is lying.
- A) examined                      B) covered                      C) masked                      D) punched
- 45) He became indignant when it was suggested he made a mistake.
- A) resentful                      B) worried                      C) shameful                      D) astonished

## Part D: Reading Comprehension

➤ Read the texts carefully and choose the best answer to the questions that follow.



### Reading 1

Ferdinand Mongin de Saussure was a Swiss linguist, semiotician and philosopher. His ideas laid a foundation for many significant developments in both linguistics and semiotics in the 20th century. He is widely considered one of the founders of 20th-century linguistics and one of two major founders (together with Charles Sanders Peirce) of semiotics, or *semiology*, as Saussure called it. One of his translators, Roy Harris, summarized Saussure's contribution to linguistics and the study of "the whole range of human sciences. **It** is particularly marked in linguistics, philosophy, psychoanalysis, psychology, sociology and anthropology." Although they have undergone extension and



critique over time, the dimensions of organization introduced by Saussure continue to inform contemporary approaches to the phenomenon of language. As Leonard Bloomfield stated after reviewing Saussure's work: "he has given us the theoretical basis for a science of human speech".

Saussure's theoretical reconstructions of the Proto-Indo-European language vocalic system and particularly his theory of laryngeals, otherwise unattested at the time, bore fruit and found confirmation after the decipherment of Hittite in the work of later generations of linguists such as Émile Benveniste and Walter Couvreur, who both drew direct inspiration from their reading of the 1878 *Mémoire*. Saussure had a major impact on the development of linguistic theory in the first half of the 20th century with his notions becoming incorporated in the central tenets of structural linguistics. His main contributions to structuralism include his notion of the arbitrariness of the linguistic sign. There is also his theory of a two-tiered reality about language. The first is the *langue*, the abstract and invisible layer, while the second, the *parole*, refers to the actual speech that we hear in real life. This framework was later adopted by Claude Levi-Strauss, who used the two-tiered model to determine the reality of myths. His idea was that all myths have an underlying pattern, which forms the structure that makes them myths.

In Europe, the most important work after Saussure's death was done by the Prague school. Most notably, Nikolay Trubetzkoy and Roman Jakobson headed the efforts of the Prague School in setting the course of phonological theory in the decades from 1940. Jakobson's

universalizing structural-functional theory of phonology, based on a markedness hierarchy of distinctive features, was the **first successful solution** of a plane of linguistic analysis according to the Saussurean hypotheses. Elsewhere, Louis Hjelmslev and the Copenhagen School proposed new interpretations of linguistics from structuralist theoretical frameworks.

In America, where the term structuralism became **highly ambiguous**, Saussure's ideas informed the distributionalism of Leonard Bloomfield, but his influence remained limited. Systemic functional linguistics is a theory considered to be based firmly on the Saussurean principles of the sign, albeit with some modifications. Ruqaiya Hasan describes systemic functional linguistics as a 'post-Saussurean' linguistic theory.



✓ متن فوق از جدیدترین مقالات منتشر شده در دانشنامه آزاد ویکی پدیا (Wikipedia) است.  
✓ این مقاله در تاریخ ۱۵ اکتبر ۲۰۲۵ منتشر شده است. آزمون حاضر در تاریخ ۸ ژانویه ۲۰۲۶ برگزار می‌شود.  
✓ لینک دسترسی به مقاله: [https://en.wikipedia.org/wiki/Ferdinand\\_de\\_Saussure](https://en.wikipedia.org/wiki/Ferdinand_de_Saussure)

**46) What is the main purpose of the passage?**

- A) To compare European and American schools of linguistics
- B) To explain Saussure's theories and trace their influence
- C) To criticize structural linguistics
- D) To describe the history of semiotics before Saussure

**47) Why did Lévi-Strauss find Saussure's model useful?**

- A) It helped reveal underlying structures
- B) It explained sound systems
- C) It supported empirical linguistics
- D) It focused on spoken language

**48) What does the pronoun "It" in the first paragraph of the passage refer to:**

- A) Semiotics
- B) Saussure's translation
- C) Saussure's contribution
- D) Human speech

**49) What can be inferred from Bloomfield's statement about Saussure?**

- A) Bloomfield rejected Saussure's theories
- B) Saussure focused only on philosophy
- C) Bloomfield disagreed with structuralism
- D) Saussure provided a scientific framework

**50) What does the phrase "first successful solution" suggest about Jakobson's theory?**

- A) Other attempts had failed
- B) It solved all linguistic problems
- C) It replaced Saussure's ideas
- D) It was universally accepted

**51) What event later confirmed Saussure's theory of laryngeals?**

- A) The rise of structural linguistics
- B) Bloomfield's publications
- C) The decipherment of Hittite
- D) Jakobson's phonological theory

**52) Why does the author say structuralism in America was "highly ambiguous"?**

- A) It was rejected by linguists
- B) It lacked European influence
- C) It focused only on syntax
- D) It had multiple interpretations

**53) Saussure's notion of the arbitrariness of the linguistic sign became central to .....**

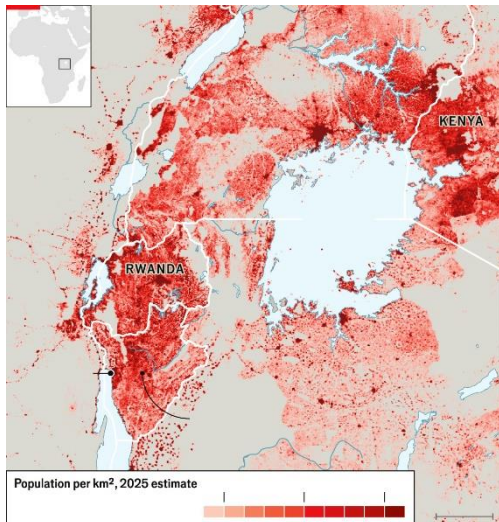
- A) Distributionalism
- B) Structural linguistics

- C) Psychoanalysis
- D) Functional grammar

**54) Why does the author mention Ruqaiya Hasan’s description of systemic functional linguistics?**

- A) To show Saussure’s theories were outdated
- B) To demonstrate ongoing adaptation of Saussure’s ideas
- C) To criticize American linguistics
- D) To contrast functionalism and structuralism

## Reading 2



In what remains of a cemetery, at what used to be the edge of Bujumbura, the living displace the dead. Burundi’s largest city is growing so fast that people have built homes where once there were graves, sometimes without moving the bodies beneath. Berchmans Nyandwi, who digs graves and organises funerals, looks on with folded arms. Soon, he says, all this will be houses. You find what space you can in Burundi, where 14m people squeeze into an area not much bigger than Wales or Massachusetts. Many

places are far more populous, and a few islands and city-states are denser. But the only countries to beat Burundi on both counts are Bangladesh, Taiwan and, by a little, its northerly neighbour, Rwanda.

That makes Burundi an extreme example of how population pressure is changing African societies. For most of history Africa has been sparsely populated, and much of it remains so. But the continent has ten times as many people as a century ago, and places like the Niger delta and the Ethiopian highlands are getting crowded. So, too, is the region around Burundi, from Kenya to Congo, a swathe of humanity between Africa’s Great Lakes, where there are good rains and enough altitude to soften the equatorial heat.

Density does not necessarily mean cities. Most Burundians still live in the *collines*, the hills, growing bananas, cassava and beans on steep slopes that crumble into the valleys. On roadsides, in gardens, between houses, it feels like every spare scrap of land is planted with maize. By conventional measures, often based on administrative divisions, Burundi is one of the most rural countries on the planet.

But the countryside is thickening, in ways that break established definitions. An oecd-backed research project called Africapolis considers a place to be urban if it has more than 10,000 inhabitants in buildings not more than 200 metres apart. By that measure 78% of Burundians already live in “urban” areas and, by 2050, most of the country will be one

continuous agglomeration. This idea should not be taken too literally. It might be better to say that much of Burundi is becoming an in-between place: not quite country, not yet town.

The pressing question is how to grow enough food. The optimists can cite Ester Boserup, a Danish economist, who argued in the 1960s that land scarcity drives farmers to adopt more intensive methods. She was thinking of innovators like Vivien Nduwumwami, a retired agricultural officer in Kayanza, in the highlands. He bounds down a hillside showing where he has cut terraces to prevent erosion, spread lime to reduce acidity, and installed irrigation that allows him to plant three times a year.

But in Burundi it is hard to shake off the spectre of Thomas Malthus, a gloomy English cleric, who wrote in 1798 that “the power of population is indefinitely greater than the power in the earth to produce subsistence.” Not far from Mr Nduwumwami lives Ezechiel Niyibizi, in abject conditions. His father and uncles fought over the family’s meagre land; after his father died, he was left with nothing. The local government helped him to get a tiny house, with an earth floor, and a plot of land ten metres long and wide. When he cannot find waged work, his children sleep hungry.



✓ متن فوق از جدیدترین مقالات منتشر شده در مجله اکونومیست (The Economist) است.  
✓ این مقاله در تاریخ ۴ ژانویه ۲۰۲۵ منتشر شده است. آزمون حاضر در تاریخ ۸ ژانویه ۲۰۲۶ برگزار می‌شود.  
✓ لینک دسترسی به مقاله: <https://www.economist.com/middle-east-and-africa/2026/01/04/burundi-is-running-out-of-space>

**55) Why are houses being built on former cemetery land near Bujumbura?**

- A) Traditional burial practices are no longer followed
- B) The land is considered less valuable for agriculture
- C) Rapid population growth has reduced available living space
- D) Authorities encouraged development in that area

**56) According to the passage, which countries are denser than Burundi?**

- A) Kenya and Congo
- B) Nigeria, Egypt, and South Africa
- C) Rwanda and Ethiopia
- D) Bangladesh, Taiwan, and Rwanda

**57) What does the passage say about Burundi’s population size and land area?**

- A) It has many people in a small area
- B) It has declining population numbers
- C) It has few people and much land
- D) It has more land than neighboring countries

**58) What does Berchmans Nyandwi believe will happen to the area in the future?**

- A) It will be filled with houses
- B) It will be protected by law
- C) It will remain a cemetery
- D) It will become farmland

**59) What is described as the most urgent challenge facing Burundi?**

- A) Managing urban migration
- B) Protecting historical burial sites
- C) Producing enough food for the population
- D) Reducing dependence on foreign aid

**60) What point is made by contrasting Nduwumwami’s experience with that of Ezechiel Niyibizi?**

- A) Agricultural success depends mainly on education
- B) Government assistance is equally effective everywhere
- C) Rural conflict is the primary cause of hunger

D) Land scarcity can lead to both innovation and severe poverty

**61) According to the passage, where do most Burundians currently live?**

- A) In large cities near Lake Tanganyika
- B) In newly defined urban settlements
- C) In rural hills cultivating small plots of land
- D) In government-planned housing areas

**62) Why does the author include the example of Vivien Nduwumwami?**

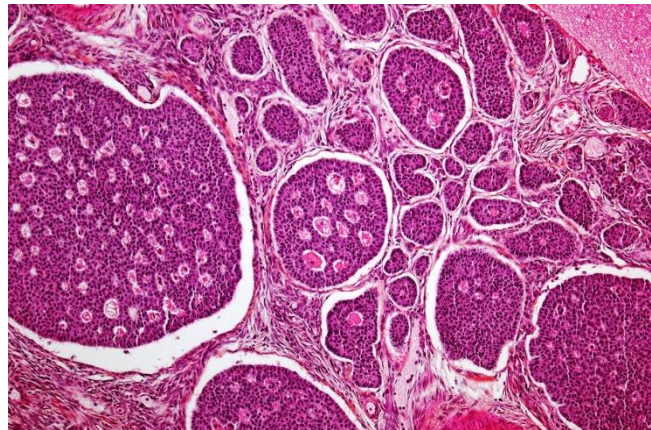
- A) To show how government support improves farming
- B) To illustrate optimism about agricultural innovation under pressure
- C) To argue that farming expertise is disappearing
- D) To demonstrate the limits of traditional agriculture

**63) What crops are mentioned as commonly grown in Burundi?**

- A) Rice, wheat, and barley
- B) Sorghum, millet, and rice
- C) Coffee, tea, and cotton
- D) Bananas, cassava, and beans

## Reading 3

In some parts of the world, donated blood or blood components such as platelets are disinfected with ultraviolet (UV) light and riboflavin, also known as vitamin B2, before being transfused into patients. Known as the Mirasol process, the technique can neutralize an assortment of viruses, bacteria, and parasites. Now, a



group of researchers wants to conscript the procedure to fight cancer, inactivating tumor cells and then reintroducing them into the body to try to set off a helpful immune response. They've already tested the approach in mice and dogs, and a phase 1 trial is set to start this month in patients with ovarian cancer.

“The hope would be that this will slow or prevent relapse” in combination with other therapies, says chemist Ray Goodrich of Colorado State University, who helped develop the Mirasol process more than 20 years ago and in 2018 co-founded a company, PhotonPharma, to adapt it for fighting cancer. Cancer vaccinologist Lana Kandalaf of Ludwig Cancer Research’s Lausanne Branch says the new vaccine could work. Because it incorporates whole cancer cells, it can deliver all of a tumor’s neoantigens, novel proteins not found on healthy body cells that the immune system can recognize, she notes. As a result, it could sidestep a common challenge with other cancer vaccines—predicting which neoantigens to include for optimal immune stimulation. But other researchers remain skeptical. Attempts to make vaccines with whole cancer cells have a long history of failure, says Lawrence Fong, an

immunologist and medical oncologist at the Fred Hutchinson Cancer Center. “As a scientist, I’d say, ‘been there, done that.’”

Goodrich started working on a method for disinfecting blood as a graduate student in the late 1980s, when HIV contamination of the blood supply was a big worry. After nearly a decade, he and his colleagues settled on a solution: Mix blood with riboflavin, which latches onto DNA and RNA molecules, and then expose the liquid to UV light, which causes the riboflavin to react with and damage any genetic material from microbes. The approach leaves pathogens unable to reproduce—although it also damages platelets, red blood cells, and proteins in the plasma, meaning patients may require extra transfusions. The procedure has been approved for use in Europe, Canada, and other countries, but not in the United States, which has OK’d other technologies for disinfecting platelets and plasma.

The idea for a vaccine came when Goodrich noticed that after white blood cells went through the Mirasol process, they were “inactivated but they were intact.” He and his colleagues speculated that generating similar cellular zombies from a patient’s cancer cells and reinjecting them might ignite an immune response against a tumor. The approach would be safe, the researchers concluded, because the UV-treated cancer cells couldn’t divide and wouldn’t be able to form new tumors.

Goodrich admits that when his group first proposed the strategy, “everyone said we were crazy.” Researchers have been trying to develop vaccines that contain whole cancer cells for more than 50 years, and although some formulations made it to clinical trials, they produced a poor immune response. None of the vaccines has been approved for humans, although one is available for pets.



✓ متن فوق از جدیدترین مقالات منتشر شده در مجله ساینس (Science) است.

✓ این مقاله در تاریخ ۱ ژانویه ۲۰۲۶ منتشر شده است. آزمون حاضر در تاریخ ۸ ژانویه ۲۰۲۶ برگزار می‌شود.

✓ لینک دسترسی به مقاله: <https://www.science.org/content/article/blood-cleansing-method-faces-its-first-test-cancer-vaccine>

**64) What is the passage mainly about?**

- A) A comparison of different cancer vaccines
- B) Problems with approving medical technologies in the U.S.
- C) A new use of a blood-disinfection technique to fight cancer
- D) The history of ultraviolet light in medicine

**65) What is one drawback of the Mirasol process?**

- A) It is too expensive to use
- B) It works only on bacteria
- C) It damages some blood components
- D) It requires long treatment times

**66) What observation led to the idea of a cancer vaccine?**

- A) Treated white blood cells stayed intact
- B) UV light increased immune activity
- C) Treated cancer cells died immediately
- D) Tumors shrank in animal trials

**67) What type of cancer will be studied in the phase 1 human trial?**

- A) Breast cancer
- B) Lung cancer
- C) Skin cancer
- D) Ovarian cancer

**68) According to Ray Goodrich, what is the goal of the new treatment?**

- A) To reduce or delay cancer relapse  
B) To cure cancer on its own  
C) To replace existing therapies  
D) To eliminate the need for surgery

**69) What new use do researchers propose for the Mirasol process?**

- A) Detecting early-stage cancer  
B) Creating a cancer vaccine  
C) Replacing chemotherapy  
D) Improving blood storage

**70) Why is Lawrence Fong skeptical of the new approach?**

- A) It has not been tested in animals  
B) Whole-cell cancer vaccines failed before  
C) The immune response may be weak  
D) UV light is dangerous to humans



## Part E: Writing

Choose one of the following topics and write an essay about it. Write for at least 150 words in no more than 20 minutes.

**A) *Too much emphasis is given for the education of students. More government money should be spent on free time activities for young people.*** To what extent do you agree with this view? Give reasons for your answer and include any relevant examples from your own experience or knowledge.

**B) *Intelligence is the most important quality for a manager.*** To what extent do you agree or disagree? Give reasons for your answer and include any relevant examples from your own experience or knowledge.



THIS IS THE END OF THE TEST.

# دوره‌ها و آزمون‌های بسندگی دانشجویان دکتری

## مرکز زبان آموزی دانشگاه اصفهان

زمستان ۱۴۰۴

برگزاری آزمون بسندگی  
زبان انگلیسی دانشگاه اصفهان  
(UIEPT)  
پنجشنبه  
۲ بهمن ۱۴۰۴

محل برگزاری آزمون:  
دانشگاه اصفهان، دانشکده زبانهای خارجی  
مرکز زبان آموزی، ساختمان شهید بهشتی

۰۳۱۳۷۹۳۳۱-۲۳  
ulc.ui.ac.ir

جهت دریافت آدرس  
از نشان اسکن کنید:

جزئیات بیشتر در بخش اخبار و  
اطلاعیه های سایت

مرکز زبان آموزی دانشگاه اصفهان  
برگزاری کلاس

۶ دوره آزمون  
بسندگی زمستان ۱۴۰۴

دوره آزمون	تاریخ	ردیف
۱۳۲	پنجشنبه ۱۱ دی	۱
۱۳۳	پنجشنبه ۱۸ دی	۲
۱۳۴	پنجشنبه ۲ بهمن	۳
۱۳۵	پنجشنبه ۳۰ بهمن	۴
۱۳۶	پنجشنبه ۷ اسفند	۵
۱۳۷	پنجشنبه ۱۴ اسفند	۶

ulc.ui.ac.ir eitaa.com/uile\_official

مرکز زبان آموزی دانشگاه اصفهان

- مشاوره تخصصی زبان
- به صورت تلفنی و رایگان
- یکشنبه و سه شنبه ها ساعت ۹ تا ۱۲ قبل از ظهر

آزمون های زبان داخلی و خارجی:  
(IELTS, TOEFL, PTE, SAT, GRE, MSRT, MCHE, UIEPT, EPT, TOLIMO, MHLE, OPI, OET, MELAB, iTEP, Cambridge Exams (KET, PET, FCE, CAP, CPE), and TOEIC)

دوره های مکالمه، ترجمه، بحث، دوره های ترمیک کودک، نوجوان و بزرگسال، کلاس ها و آزمون بسندگی دانشجویان دکتری، زبان عمومی، مقاله نویسی و ...

09395809376  
ulc.ui.ac.ir  
ol.ui.ac.ir  
eitaa.com/uile\_official  
ulc.ui.ac.ir@gmail.com